

Bulletin 2942 6 April 2015

Club President: Simon Pearson  
Club Secretary: Teena Griffiths  
Club Contact: Kevin Harrison 0407 772 225  
Rotary International President: Gary Huang

# Rotary Club of Chelsea

## WHISPERING WAVES



**Guests, family and friends are very welcome. PLEASE book them in by contacting Kevin Harrison 0407 772 225**

**Meetings are at the Chelsea RSL unless otherwise stated.**

**April is Magazine Month**

Tue 7 Apr	<b>No meeting this week.</b>
Sat 11 Apr	<b>The Reef and Beef Night has had to be cancelled but please feel free to think of ideas for another great fundraiser. All suggestions welcomed.</b>
Tue 14 Apr	<b>Steve Reynolds - The Automotive Manufacturing Industry's demise</b> Chair: Simon Pearson    Sergeant: Barry McCartney    International Card: Leo Griffiths
Tue 21 Apr	<b>Cheque presentation to Chelsea Mens Shed - we're meeting at Chelsea Mens Shed 5 Blantyre Avenue, Chelsea</b> Chair: Peter Washington    International Card: Liz Lowe



Dear members and friends,

Many thanks to Felicity Button for being available at the last minute last week to talk about her experience of being in Indonesia for a month on the New Colombo Mobility Program. It's easy to forget what a relatively privileged lifestyle we lead. Little things like flushing toilets and cold, clean water are soon missed when they're not available. Many countries don't even have basic sanitation facilities for many of their citizens, even in schools, including Indonesia, East Timor, and Vanuatu.

Felicity said that people in Indonesia, although they have a sustainable health service, need education about healthy diets and foods, especially for children. This is where programs such as the New Colombo program can help to educate both the citizens and medical professionals, as well as encourage an exchange of appreciation for different countries' cultures.

There is no meeting this week, but next week we will listen to Steve Reynolds talk to us about the Automotive Manufacturing Industry's demise. It should be an interesting night.

All the best,

*Simon.*

Reward Rotary Club of Chelsea by doing your banking.

Drop into your branch at Aspendale Gardens Shopping Centre, Aspendale Gardens or phone 9588 0610 to find out more.

Bendigo and Adelaide Bank Limited. ABN 11 068 049 178. AFSL 237879. CLUB14 (168421\_v1) (22/10/2012)



Aspendale Gardens-Edithvale **Community Bank®** Branch



Lab equipment and medical facilities; not what we're used to in Australia.



**ROTARY'S MOTTO IS "SERVICE ABOVE SELF"**

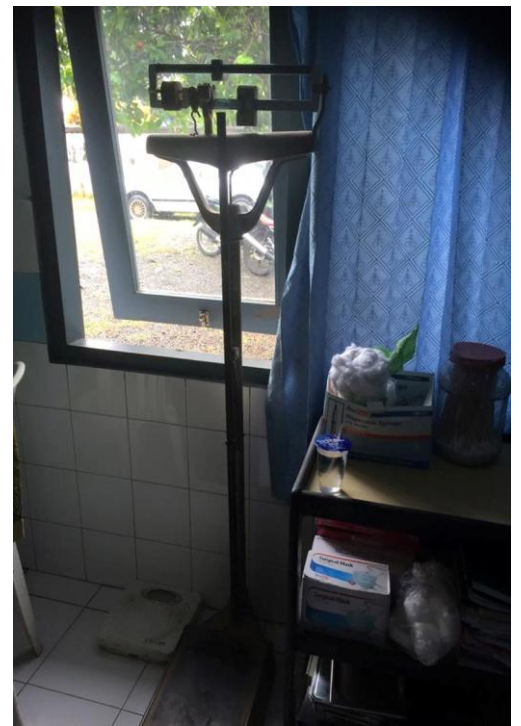
The object of Rotary is to encourage and foster the ideal of service as a basis of worthy enterprise and, in particular, to encourage and foster:

**FIRST:** The development of acquaintance as an opportunity for service.

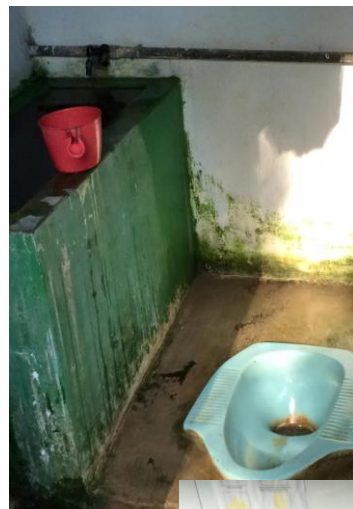
**SECOND:** High ethical standards in business and professions, the recognition of the worthiness of all useful occupations, and the dignifying of each Rotarian's occupation as an opportunity to serve society.

**THIRD:** The application of the ideal of service in each Rotarian's personal, business and community life.

**FOURTH:** The advancement of international understanding, goodwill and peace through a world fellowship of business and professional persons united in the ideal of service.











and you thought your job was hard...

## **VALE John Washington**

Our best wishes and thoughts are with Peter Washington and Helen and their family after the passing of Peter's brother John Washington at the weekend. Details of John's funeral will be provided when they are known.



**Do you have something that you would like to  
dispose of,  
that someone else might need?**

Clothes, blankets, decorations, furniture, phones, magazines, bottles, jars,  
gardening tools, heaters, lights, bikes, bookshelves, tables, chairs, rugs, linen,  
towels, computers, cabinets, pets, cars, houses...

## APRIL

### INDUCTIONS

*1st Noel Scherger (with fond memories) 1985*

*1st Marie Vinocuroff 2009*

*3rd Graham Smith 2001*

*15th George Malone 1958 (57 years!)*



### BIRTHDAYS

*9th Elena Scherger*

*15th Barry McCartney*

*20th Stuart Petchey*

*30th Terre Caughey*

### PHF

*5th Joe Segota*

*6th Gwenda Tymms*

*15th George Malone (Double Sapphire)*

*18th Ray Timms*

*18th Ray Connelly*





**Rotary**  
Club of Chelsea

## **CHELSEA ART SHOW**

# *Champagne Celebration*

## **INVITATION**

**Friday 5th June, 2015 at 7:30pm**  
**\$25**

**Gala Opening, Judging Results & Presentation of  
Major Prizes**  
**LF Payne (Chelsea) Hall, Station Street, Chelsea**

All proceeds to local community projects.  
All enquiries to [info@chelseaartshow.com.au](mailto:info@chelseaartshow.com.au)

**[www.chelseaartshow.com.au](http://www.chelseaartshow.com.au)**



**Rotary Club of Chelsea**  
**Activities Weekend**  
**18 April and 19 April 2015**

**- Bike Ride**

**Chelsea to Cowes and back**

**Saturday 18 April**

- 1) Meet Chelsea Station about 8.AM
- 2) Some can ride some can train some can catch the bus
- 3) Need to regroup Frankston Station where we ride the East Link Trail to Baxter.
- 4) Regroup Baxter and some can ride to Tyabb those who wish can bus it.
- 5) Re Group Tyabb and ride to Stony Point to catch the 12 midday ferry
- 6) There is a train from Frankston to Stony Point at 10.26 which connect to the ferry.

BUS POSITIONS ARE LIMITED

DINNER at Silver leaves Cafe to see Anne and Allan Beddows

**Wet weather plans are rain coats**

**SUNDAY 19 April**

Need to catch the 9 AM ferry or the 1 PM ferry

These match up with trains to Frankston on Sunday

The bus will have very limited seating

Then ride from Stony Point to Tyabb Baxter and home.

AT this stage we will be looking to raise \$50 per person as bus hire \$10 and our Fiji project \$10, lunch, snacks, petrol cleaning etc \$30.

The dinner at Silver leaves is at your cost, probably about \$25 pp

Accommodation at your own cost

Ferry cost is \$26 return Adult \$16 concession cards

Please note the details are still being sorted and ideas will be taken

Still Working on motels

There are activities for non riding guests

# What's On

Sun 17 May                      District Assembly, Parkdale Secondary College  
Register by 11 May with Club PE or Club Secretary.

Fri 6 Jun - Mon 9 Jun    Annual Chelsea Art Show. Gala Opening on Friday Night.

Mon 8 Jun                      Queens Birthday

For District 9810 events click here :

<http://www.9810rotary.org.au/news/calendar/>

RI Calendar can be found at <https://www.rotary.org/myrotary/en/calendar>

and for those of you planning events around school holidays...

## **School Term dates 2015 (Victoria Public Schools)**

Term 1: 28 January (school teachers start) to 27 March

Term 2: 13 April to 26 June

Term 3: 13 July to 18 September

Term 4: 5 October to 18 December

## **Suggested Links:**

Time/ LIFE Magazine - photos                      <http://time.com/photography/life/>  
<http://www.kingston.vic.gov.au/library/eLibrary/Downloading-Zinio-Digital-Magazines>  
<http://www.theaustralian.com.au/life/weekend-australian-magazine>

Rotary Magazines                      <https://www.rotary.org/myrotary/en/member-news/magazines>

Rotary Brazil - See you in Sao Paulo                      <https://www.youtube.com/watch?v=Ksrr-siLBsE>  
and again, with less whistling                      <https://www.youtube.com/watch?v=jswJbhnJbRs>

Ralph Towner                      [https://www.youtube.com/watch?v=9t\\_UgfFZOhc&list=RD9t\\_UgfFZOhc#t=0](https://www.youtube.com/watch?v=9t_UgfFZOhc&list=RD9t_UgfFZOhc#t=0)

The Weekly Newsletter of the ROTARY CLUB OF CHELSEA (INC) DISTRICT 9810

Charter granted 11/10/1954    ABN 19057 610 183    [www.chelsearotary.org.au](http://www.chelsearotary.org.au)

P O Box 103 Chelsea Vic. 3196

The Club meets weekly at the Chelsea RSL Thames Prom. Chelsea Tuesday Evenings  
6.15pm for 6.45pm start

Club Bank Details: Bendigo Bank BSB 633 000    Acc: 1424 861 33 (admin. acct.)